



Conference and Facility Hire



Keep in touch with us:

 /GTGTraining  @GTG_Training  GTG Training

gtg.co.uk

A modern lounge area with dark grey sofas, wooden coffee tables, and red lamps. The room is bright and airy, with large windows in the background. The text is overlaid on a semi-transparent white box in the upper right quadrant.

At GTG, we're proud to offer a variety of meeting rooms and conference facilities at our multi-million pound, leading-edge Training and Conference Centre in Edinburgh.

Located close to Edinburgh Airport, GTG is the ideal location for guests both near and far. We also offer free on-site parking.

As well as offering an extensive range of high standard facilities, a member of our team will be on hand at all times to help you with any queries you might have during your visit.

If you're planning an event or meeting, take a look for yourself and find out why GTG has everything you need.



Established in Edinburgh for over 20 years, GTG Edinburgh has relocated from Bankhead Drive to its current location in Lochend Industrial Estate.

Designed to host events of varying sizes, this contemporary venue is equipped with every technological and presentation requirement.

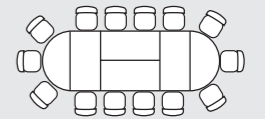
You can also choose from a variety of layouts for each of our meeting rooms, including break-out areas. For larger events, we can offer a spacious conference area.

Our rooms

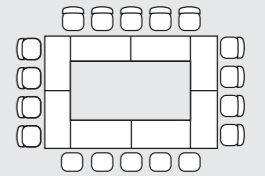
Our rooms are fully equipped for any type of training and can be configured to suit your individual needs. All rooms include:

- Dry marker board
- Flipchart
- Projector and screen
- Wi-Fi
- Air conditioning

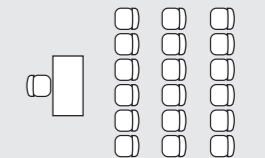
We also have classroom-style layouts that are compatible for laptops.



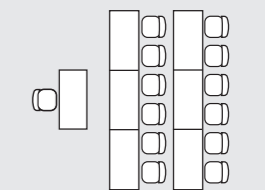
Boardroom



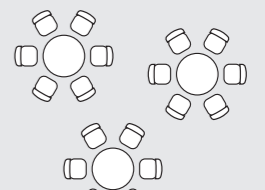
Hollow Square



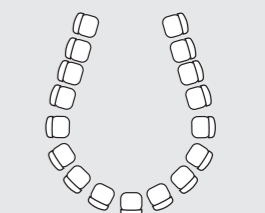
Theatre



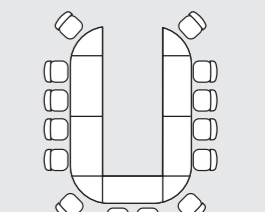
Classroom



Cabaret



Horseshoe



U-shaped



Conference facilities

Our generously proportioned, 220-seat theatre-style conference suite is ideal for large training events, product launches and awards ceremonies. The conference suite can also be broken down into separate areas depending on requirements, and can accommodate a variety of room layouts. Features include the latest audiovisual seminar technology, along with Wi-Fi, projector screens and air conditioning. We have an additional 6 classrooms hosting 65-seat theatre style in each.

The suite is adjacent to the main foyer area, which creates an ideal break-out area to set up catering and refreshments for your delegates.

Food and refreshments

Thanks to our on-site café/restaurant, you can either tuck into something from our daily menu or choose a special menu from our selection of delegate packages, which can be tailored to cater to your individual requirements. Whether you'd like tea, coffee, cake and sandwiches or a full sit-down meal, we have something to satisfy everyone.



Floor plans and room information

We have a selection of fully-equipped rooms available in various sizes and layouts.

Every room is named after a popular historical figure and there are short biographies of their namesakes displayed by the door. They provide great conversation starters, and you can brush up on Scottish history at the same time.

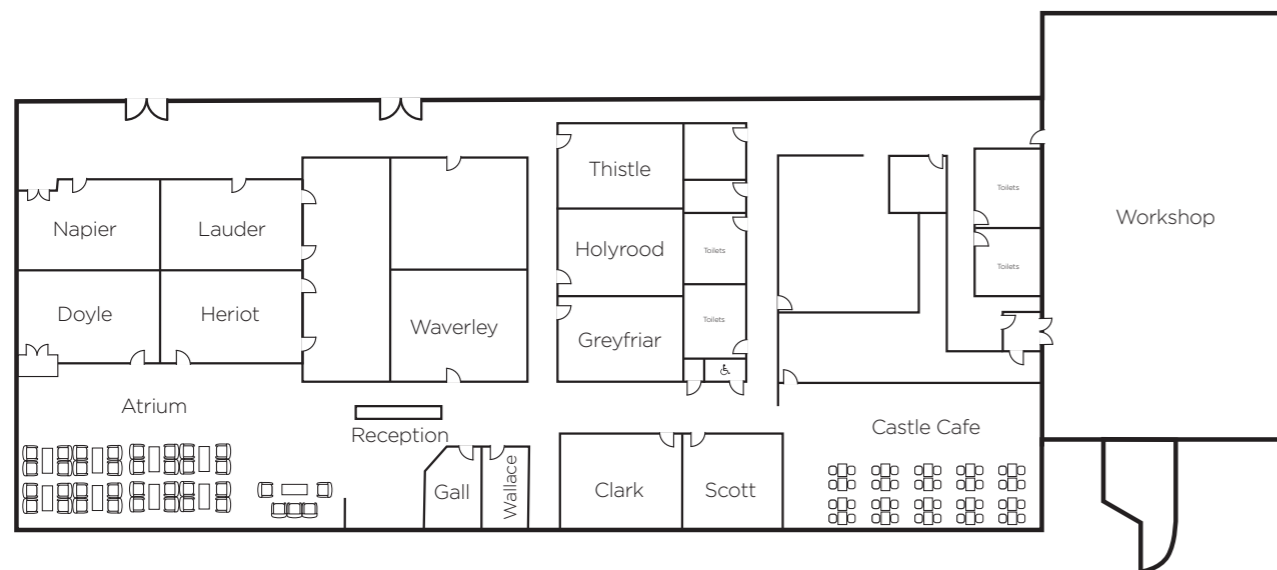
GTG Edinburgh room information												
Room Name	Capacities							Dimensions (in metres)				
	Theatre	Classroom	Boardroom	U Shaped	Horse shoe	Hollow Square	Cabaret	Length	Width	Height	Door Height	Door Width
Clark	58	22	16	24	16	20		8.6	6.2	2.7	2.1	0.93
Conference suite	220	96					20*	20	13.8	2.7	2.1	0.93
Conference/Atrium	220						20*	20	13.8	2.7	2.1	0.93
Doyle	56	24	16	16	22	20	5*	10	6.9	2.7	2.1	0.96
Napier/Doyle	110	48	32	32	44	40	10*	10	13.8	2.7	2.1	0.96
Gall			6					5.6	3.1	2.9	2.2	0.93
Greyfriars	58	22	16	24	16	20		8.7	5.9	2.7	2.1	0.93
Heriot	56	24	16	16	22	20	5*	10	6.9	2.7	2.1	0.96
Holyrood	58	22	16	24	16	20		8.7	5.9	2.7	2.1	0.93
Lauder	56	24	16	16	22	20	5*	10	6.9	2.7	2.1	0.96
Napier	56	24	16	16	22	20	5*	10	6.9	2.7	2.1	0.96
Scott	40	18	12	14	20	18		6.7	6.2	2.7	2.1	0.93
Thistle	58	22	16	24	16	20		8.7	5.9	2.7	2.1	0.93
Wallace			10					5.6	3.1	2.9	2.2	0.93
Waverley	80	30	18	22				9.1	7.7	2.7	2.1	0.93

Note: Cabaret set-up indicates number of tables, these can seat up to 7 comfortably.

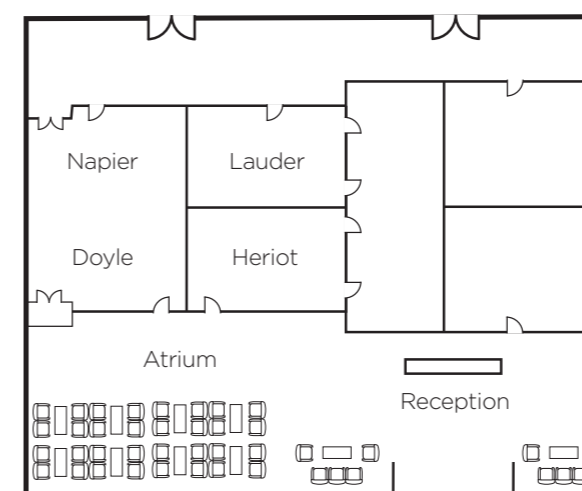
GTG Edinburgh room equipment																
Room Name	IT				Presentation			Lighting				Other				
	Laptops	Printer	Networked	Internet/Wi-Fi	Projector	White board	Flip chart	Type	In room controls	Blackout	Natural light	Sound system	Partitioning	Phone point	Air conditioning	
Doyle	R	R	✓	✓	✓		✓	Fluorescent	✓	✓		✓	✓		✓	
Lauder	R	R	✓	✓	✓		✓	Fluo/Down	✓	✓		✓	✓		✓	
Heriot	R	R	✓	✓	✓		✓	Fluo/Down	✓	✓		✓	✓		✓	
Napier	R	R	✓	✓	✓		✓	Fluorescent	✓	✓		✓	✓		✓	
Napier/Doyle	R	R	✓	✓	✓		✓	Fluorescent	✓	✓		✓	✓		✓	
Conference suite			✓	✓	✓		✓	Fluo/Down	✓	✓		✓	✓		✓	
Conference/Atrium			✓	✓	✓		✓	Fluo/Down	✓	✓	✓	✓	✓		✓	
Scott	R	R	✓	✓	✓	✓	✓	Fluorescent	✓	✓	✓			✓	✓	
Clark	R	R	✓	✓	✓	✓	✓	Fluorescent	✓	✓	✓			✓	✓	
Holyrood	R	R	✓	✓	✓	✓	✓	Fluorescent	✓	✓				✓	✓	
Greyfriars	R	R	✓	✓	✓	✓	✓	Fluorescent	✓	✓				✓	✓	
Thistle	R	R		✓	✓	✓	✓	Fluorescent	✓	✓				✓	✓	

R: On request.

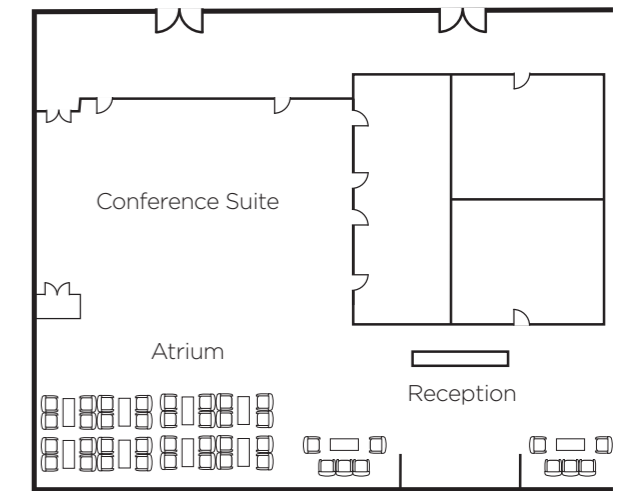
Layout 1



Layout 2



Layout 3



Edinburgh attractions

At GTG, we understand that there's more to life than work. There are a variety of attractions and places to visit near our Edinburgh facility, and we are more than happy to offer recommendations.

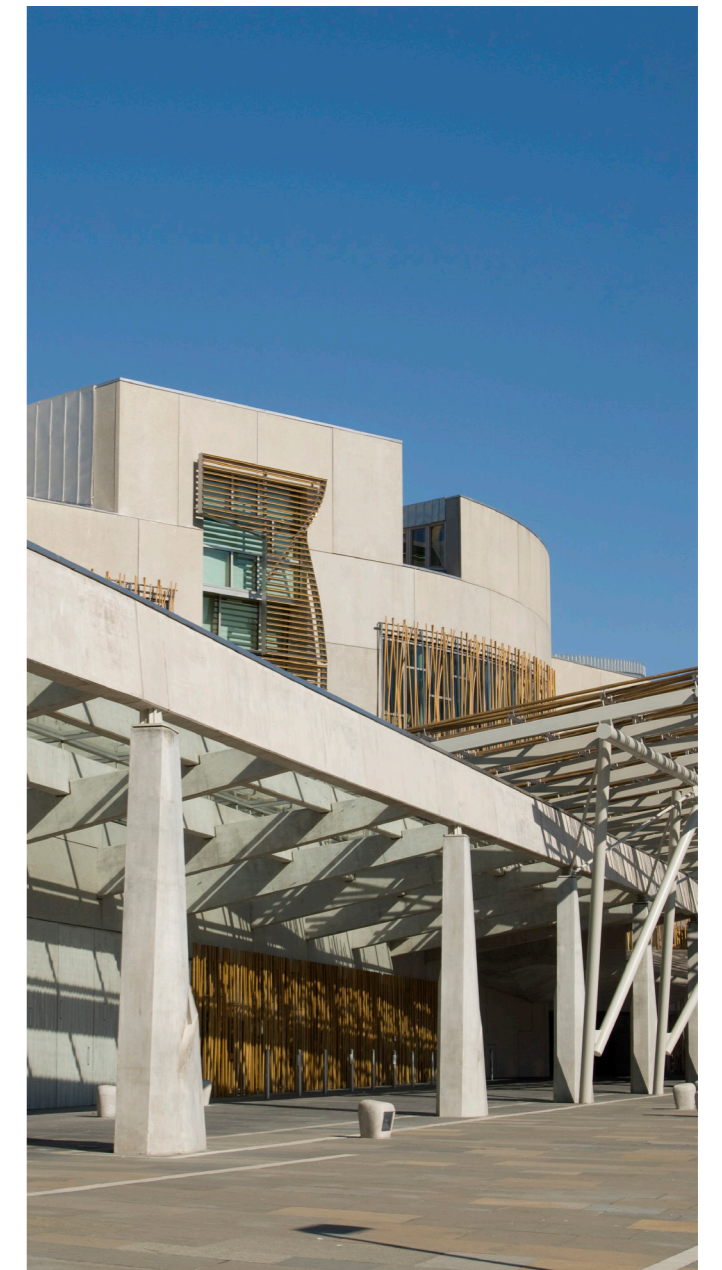
Edinburgh, Scotland's capital, is world-famous for its landmarks, history and festivals. There is a brilliant mix of attractions, accommodation and things to see and do, as well as range of shops from high-street brands to designer labels.

There are also many iconic places to visit, including Edinburgh Castle, the National Museum, Holyrood Palace and the Scottish Parliament.

You can also choose from a vast selection of bars and restaurants, which make Edinburgh one of the most popular nightlife locations in the UK.

Edinburgh is a hub for public travel, with great bus and train links to other areas of Scotland and beyond. And don't forget, you're just a short train ride from Glasgow, another one of Scotland's must-see cities.

If you have some spare time during your visit and are looking for some ideas, please speak to a member of our staff who will be happy to help.



Edinburgh 1A Queen Anne Drive, Lochend Ind. Estate, Newbridge EH28 8PL **0131 333 6833**